

ant door lock in the 17th century of the "Mauritshuis",
er castles in Holland. Lips' collection











*Cycled from original
German nuclear shelter
Inventory by spooke.com*

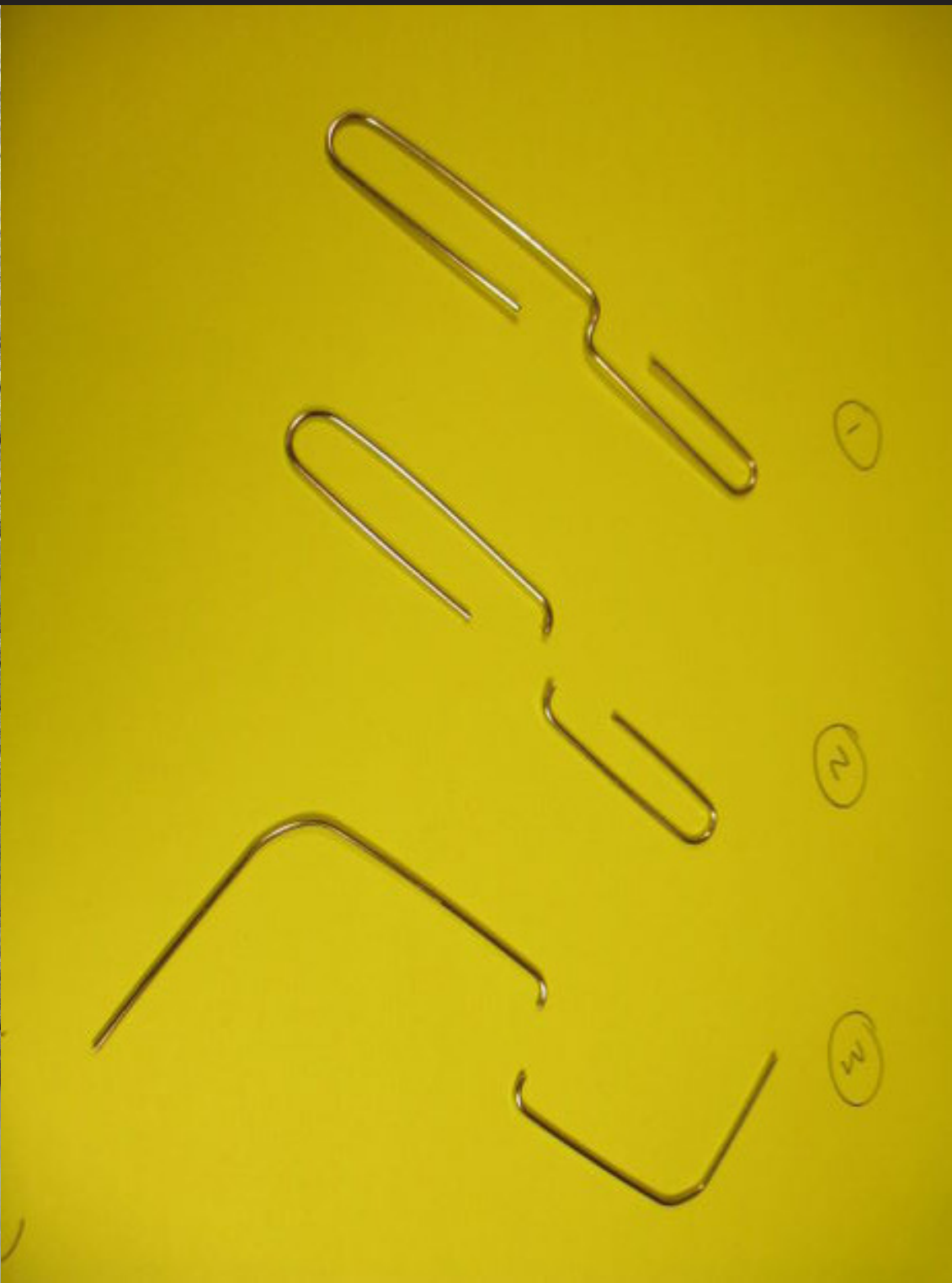
































Priority
for perso

















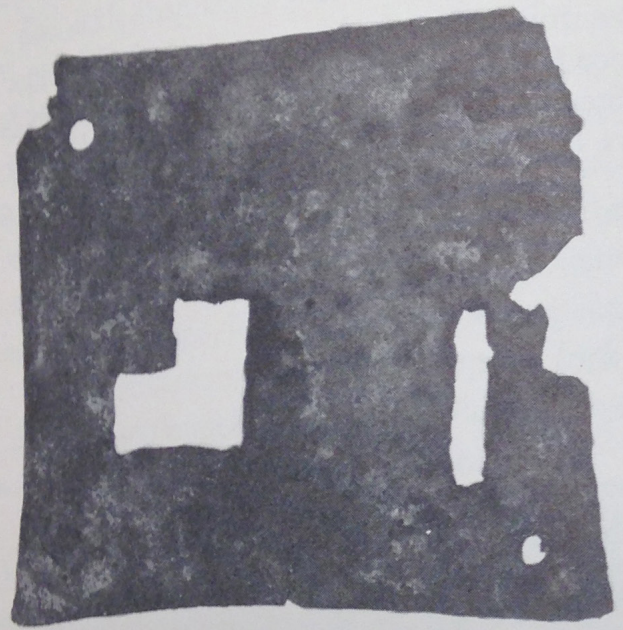




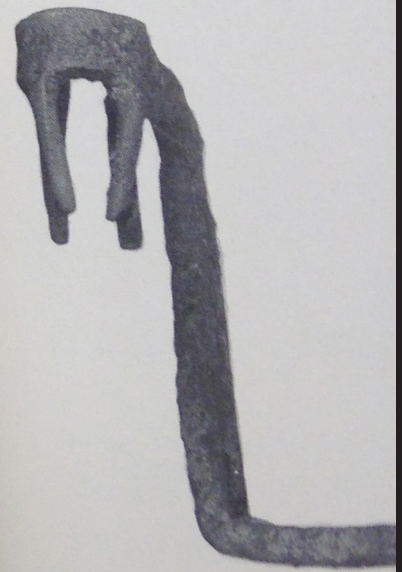
2004

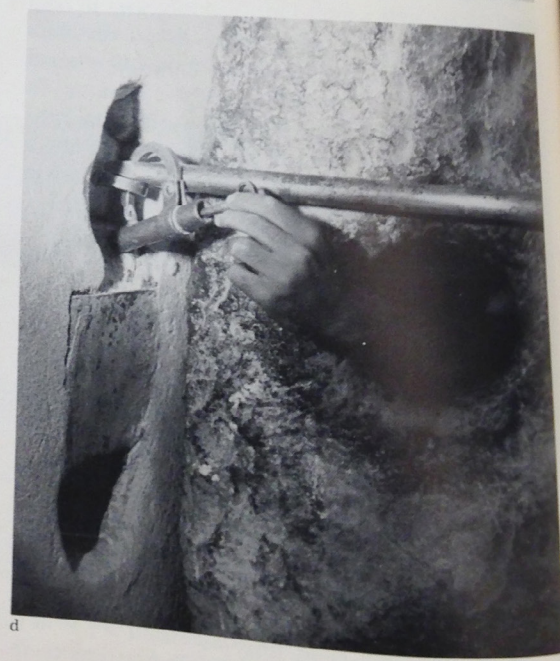


of the gate of a p...
of importance was attached to these keys... signs of authority
and were carried on the shoulder. . . ."
Wooden locks were also used in other Near East countries. They still are
not uncommon in Morocco, in the Congo, in the East Indies, in the Moluccas



Above and below: Coptic keys
12 in. long.
Opposite: Roman keys and lo
bronze. Ca. 2nd century. Jo
York.





Almost all of these are generally favored by elsewhere in the Islamic world. They have a barbed-spring push, turn, or slide key and are cast in two parts. It is not uncommon for the key to be missing when found. In succeeding periods, the use of figural locks has been underground for a long time. In succeeding periods, the use of figural locks has been underground for a long time. In succeeding periods, the use of figural locks has been underground for a long time.



5, a, b, c, d. Door believed to be from a structure of the time of Xerxes I (486-465 B.C.); now used on the tomb of F. Khan and Mardocai in Hamadan, of the







HU43

2-in-1 Pick

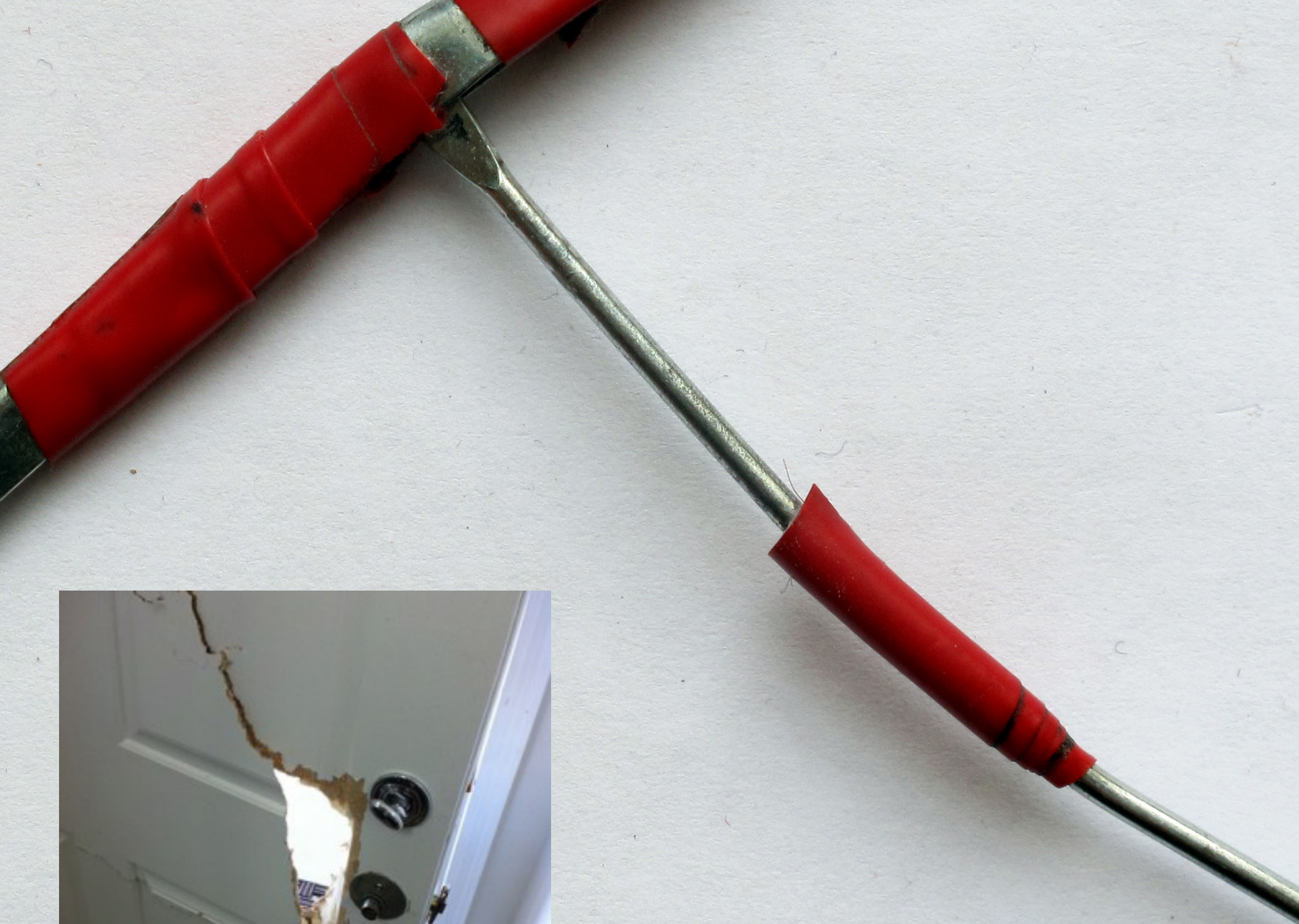
10	8	6	4	2	1
2	4	6	8	10	1
4	6	8	10	1	2
6	8	10	1	2	3
8	10	1	2	3	4
10	1	2	3	4	5
1	2	3	4	5	6
2	3	4	5	6	7
3	4	5	6	7	8
4	5	6	7	8	9
5	6	7	8	9	10







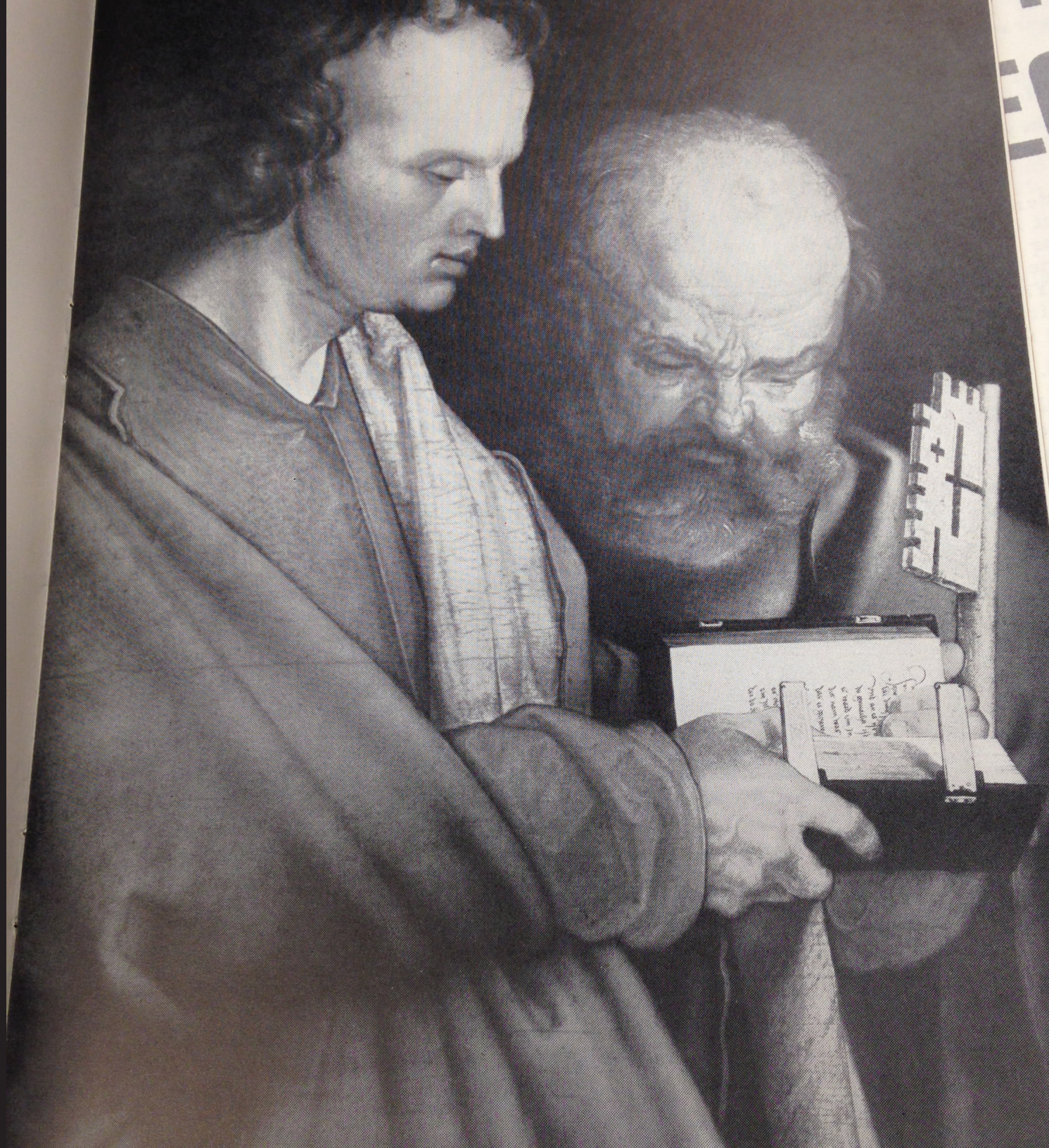












ECU

DC
00
at
w
i









It's powder so be careful







r bolt.
by a

shoot
Pad Bolt. An alternate
padlock bolt.

Padlock Bolt. A door bolt which
can be secured in the locked

against the bolt
which swings outwards.

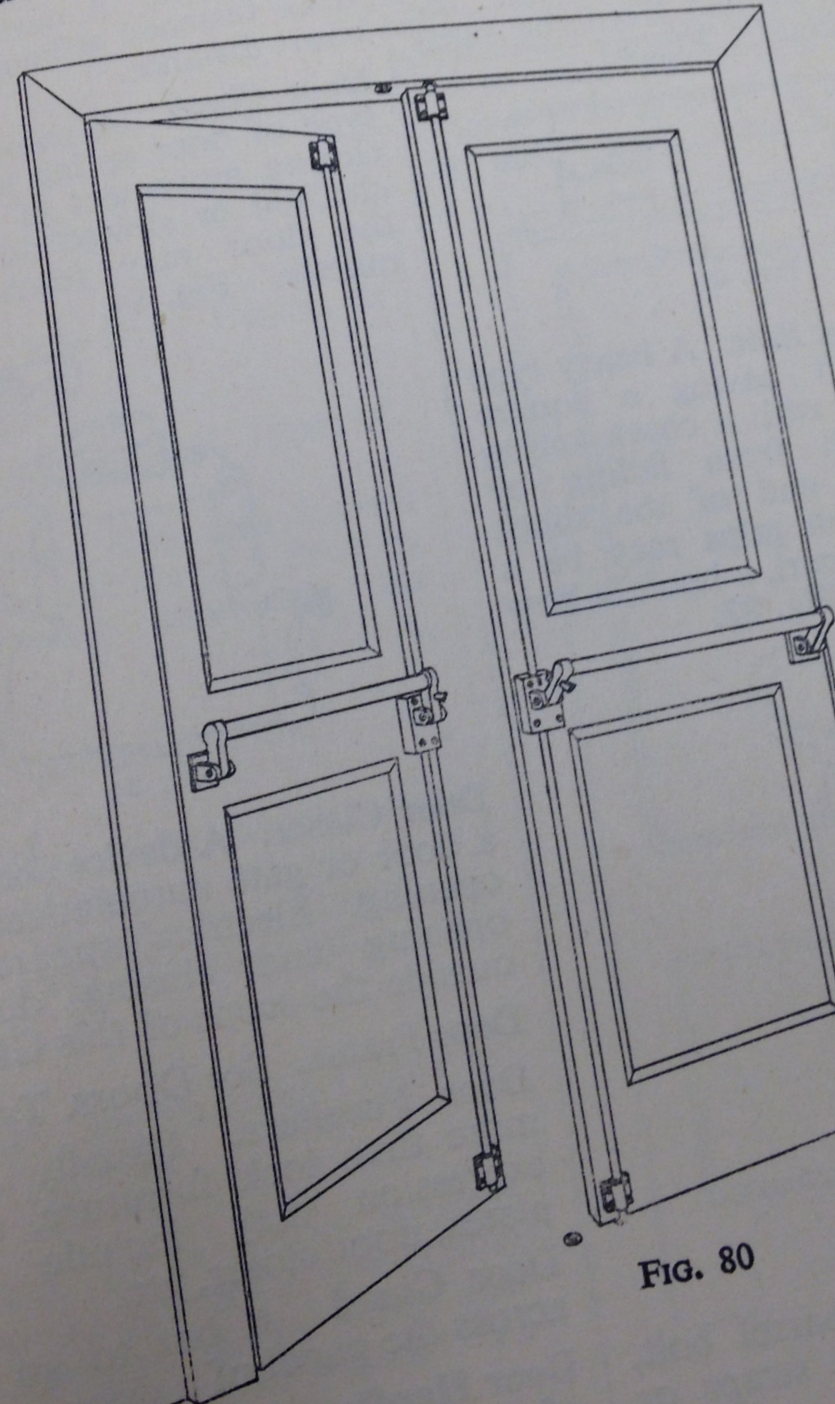


FIG. 80









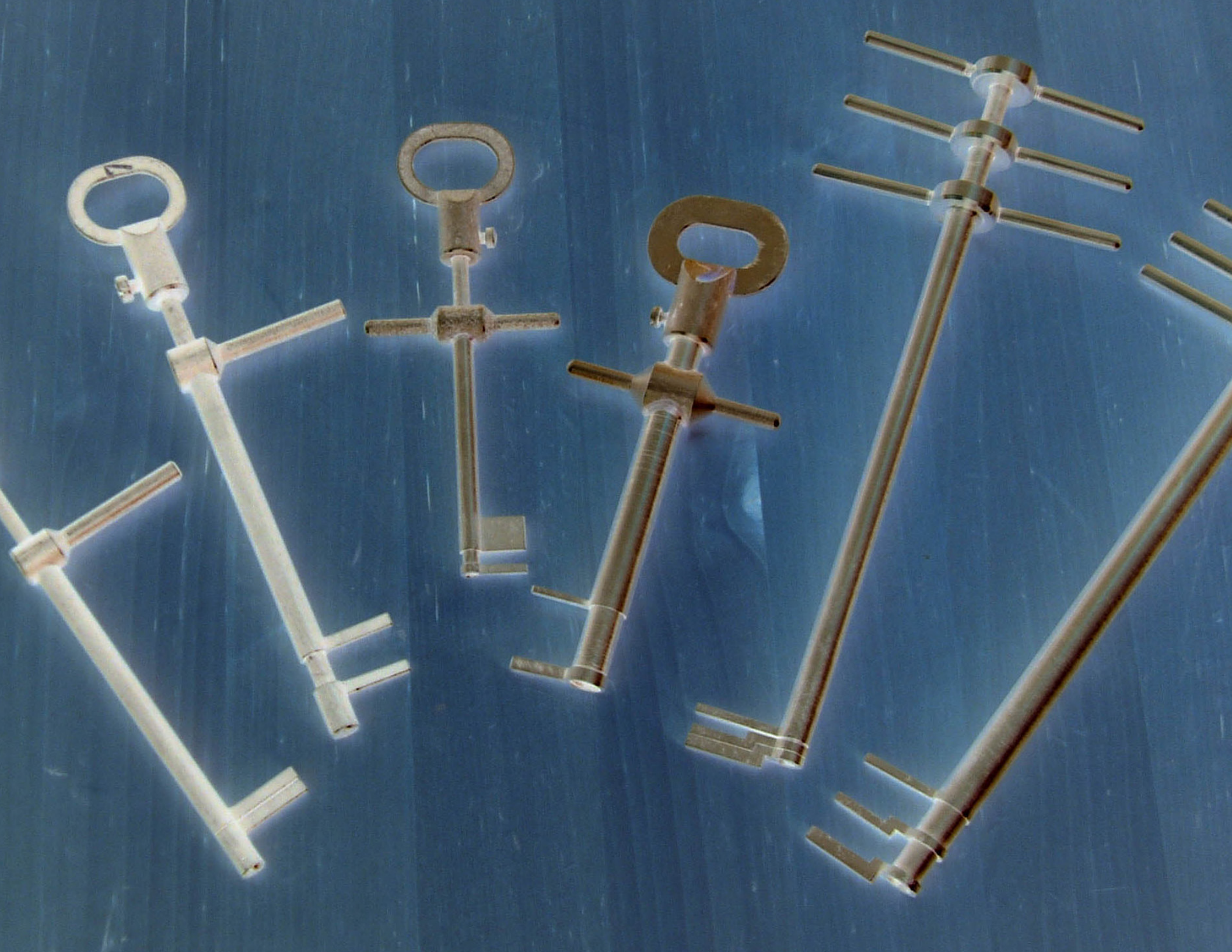



EXIT ONLY





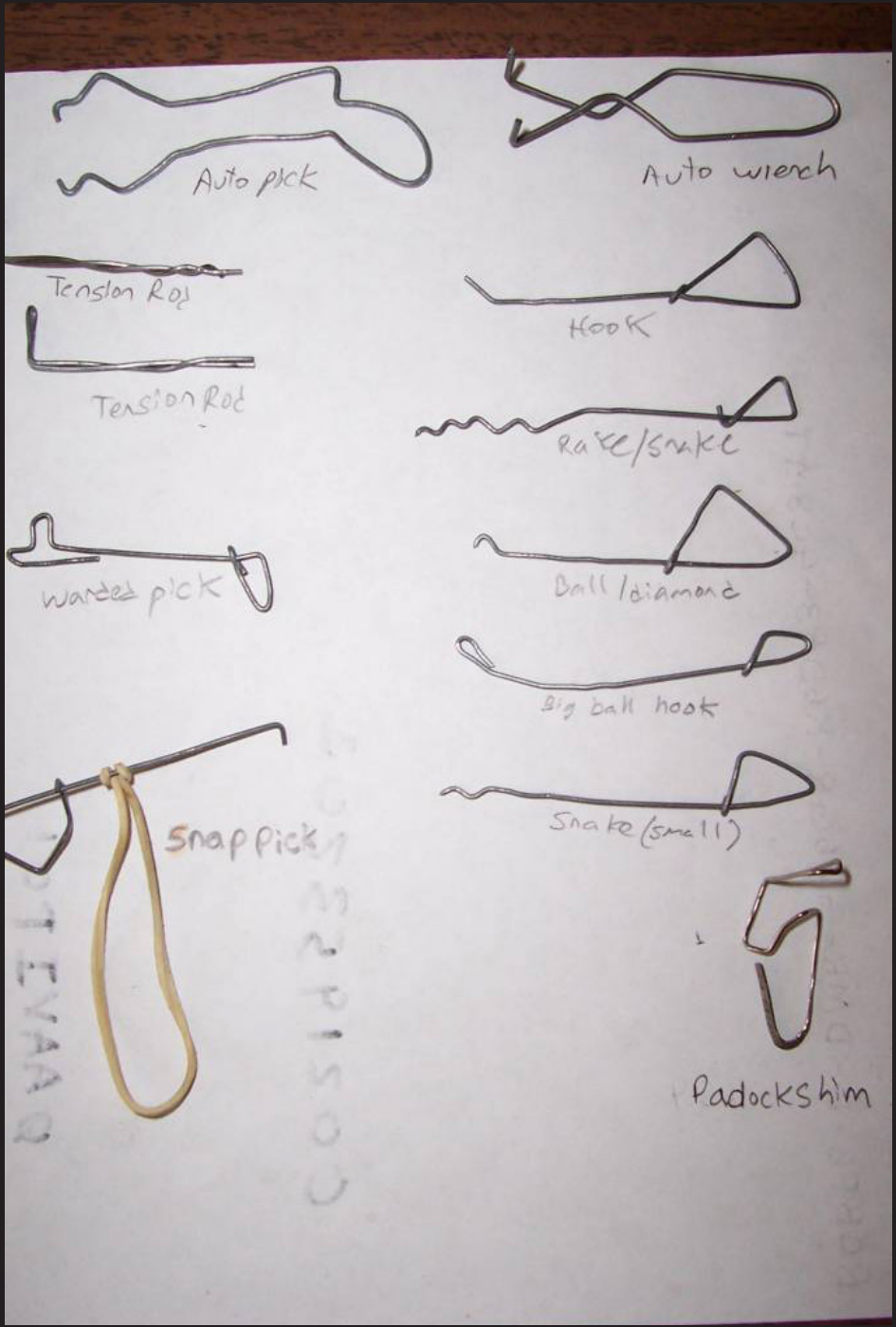






A character with a ponytail, wearing a blue and gold uniform, is shown from the back, reaching for a wooden door handle. The scene is dimly lit, with light coming from the door opening. A white text overlay is positioned in the lower center of the frame.

ROTATE  to LOCATE and HOLD  to



WALTON
EVAAG
COSIB30
E2P1500

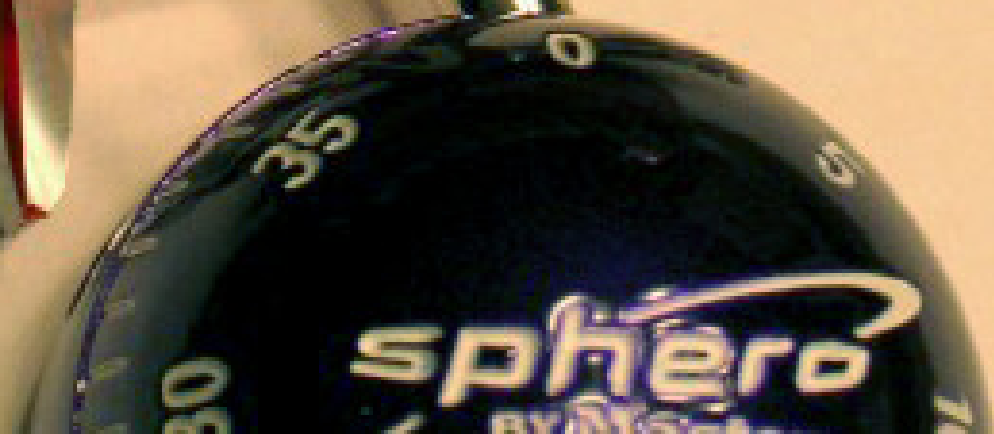
A black and white photograph of a concrete dam wall. The wall is composed of several horizontal panels. On the left side, there is a section with a warning sign. To the right of the sign is a vertical pillar with diagonal stripes. The top of the dam has a metal railing. The background shows a grassy embankment and a dense line of trees under a clear sky. The water in the foreground is calm, reflecting the dam and the sky.

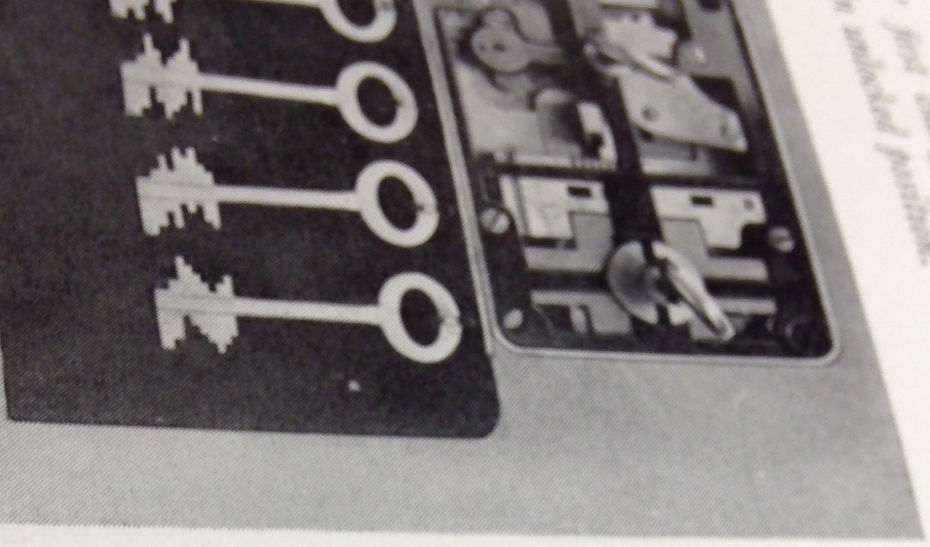
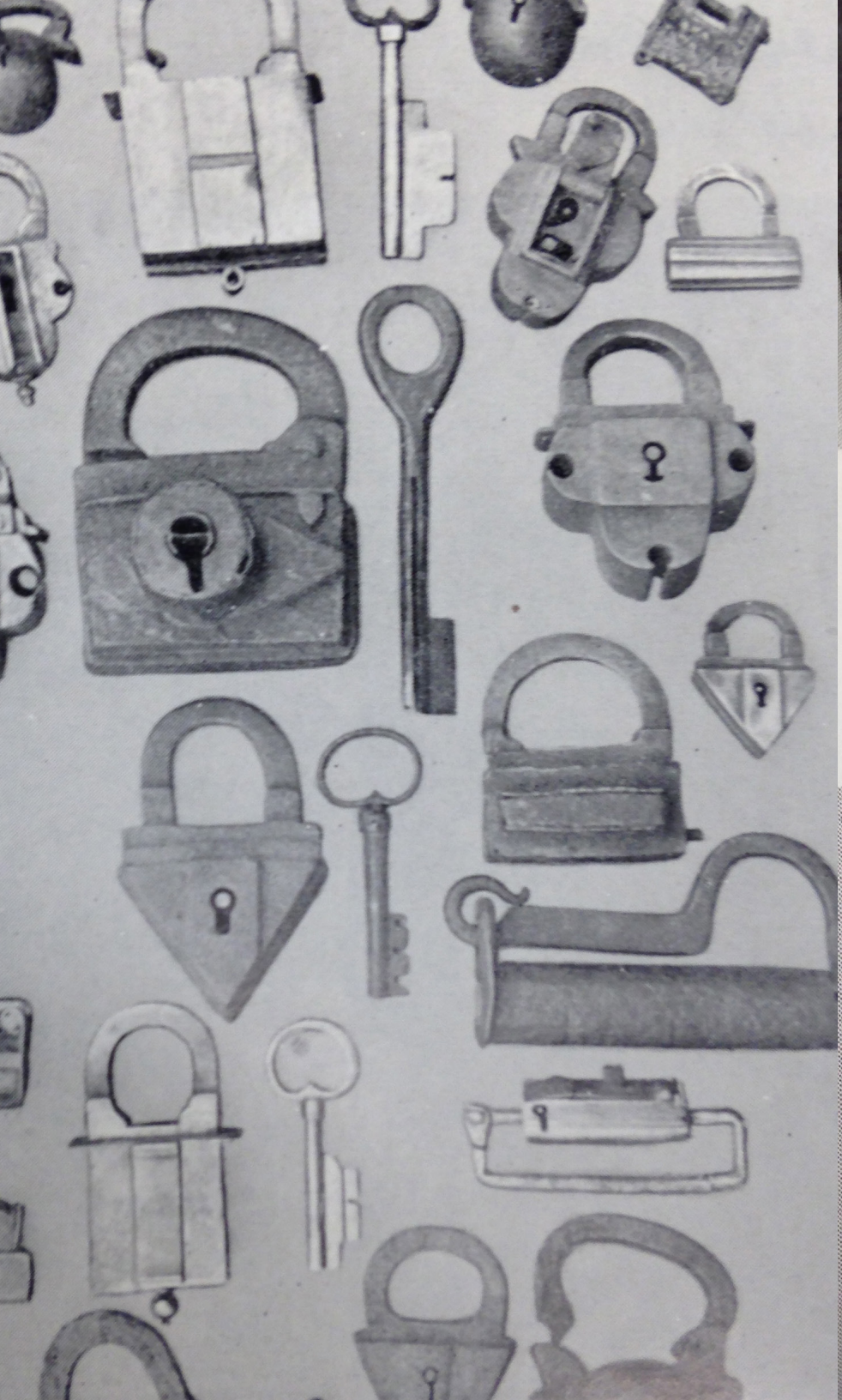
WARNING
LOCK DISCHARGE
INTERMITTENT
TURBULENT WATER



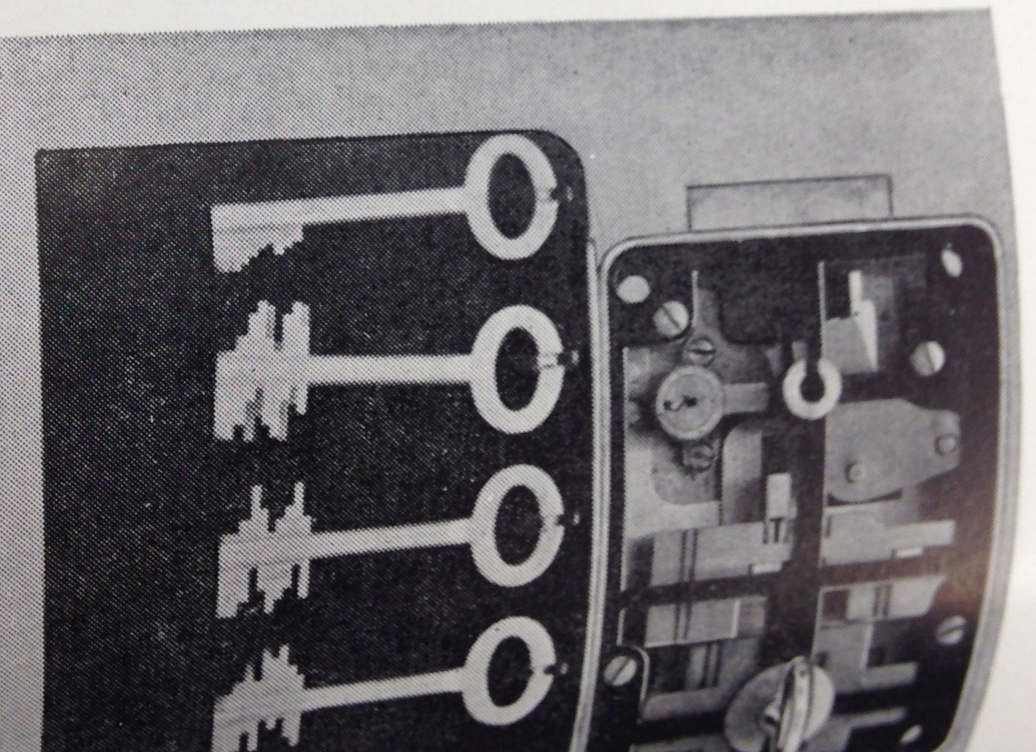








... just interchangeable lever safe deposit
... unlocked position.



... deposit box lock in locked position.
... safe



BYO



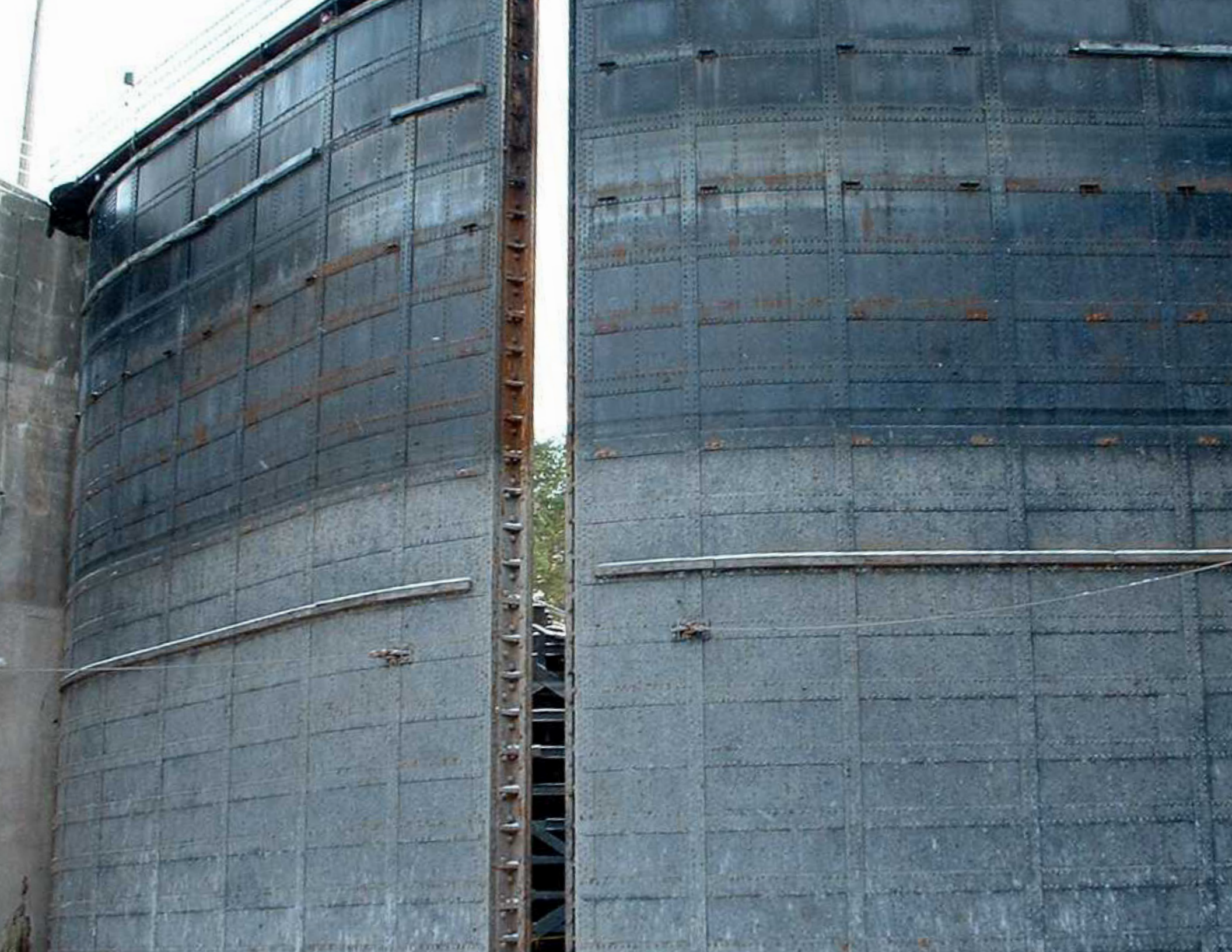




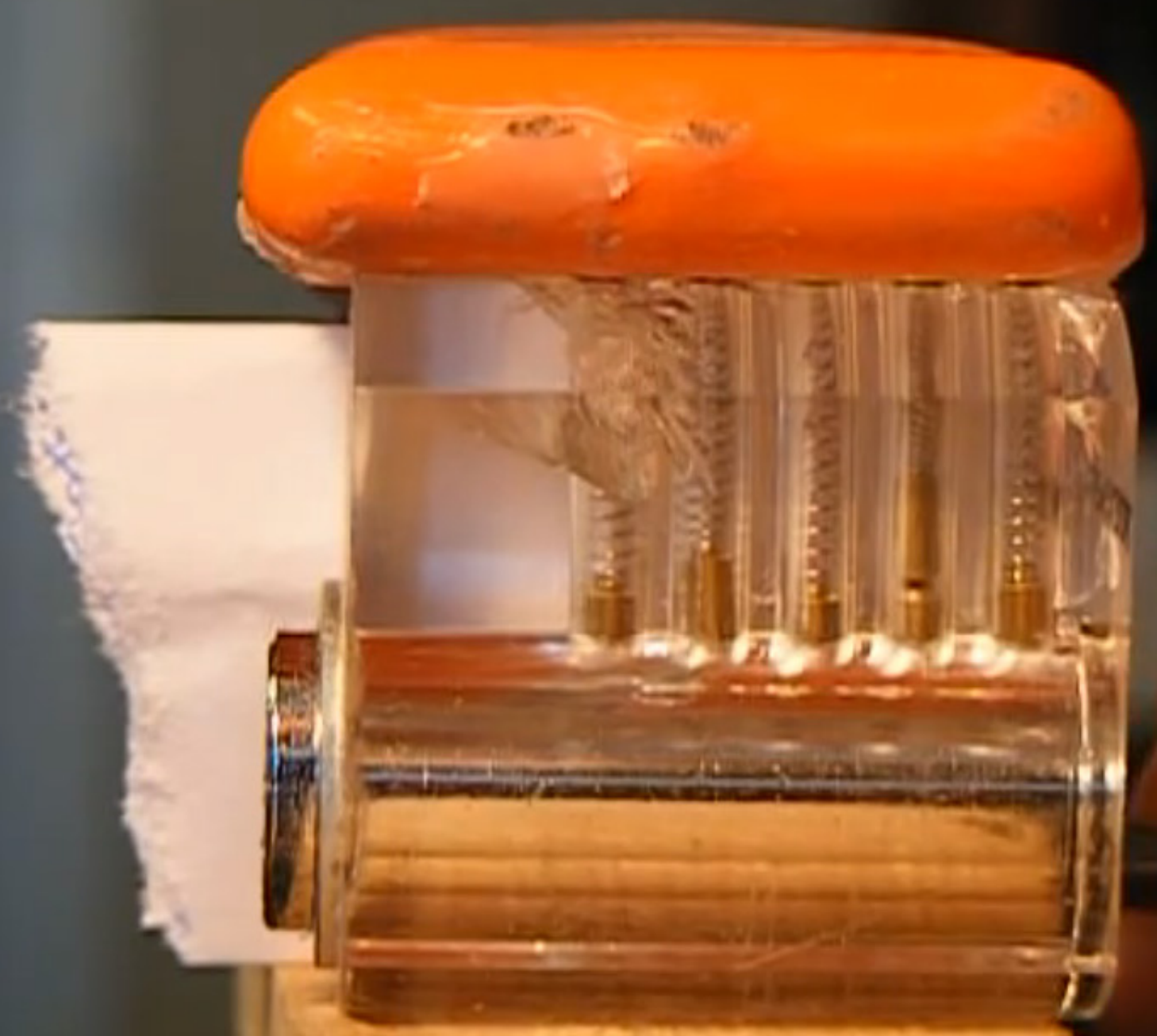






































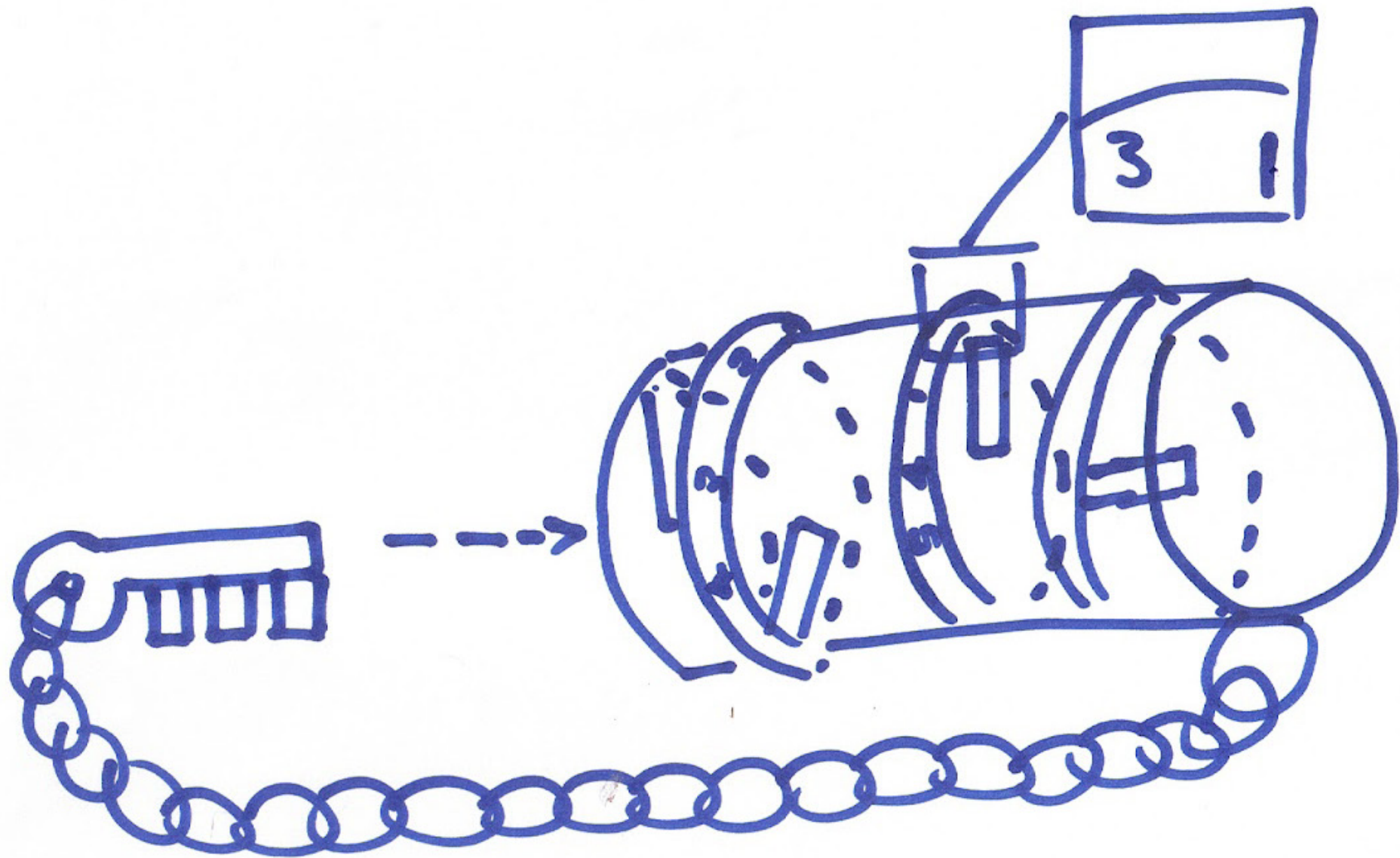
BPG-10

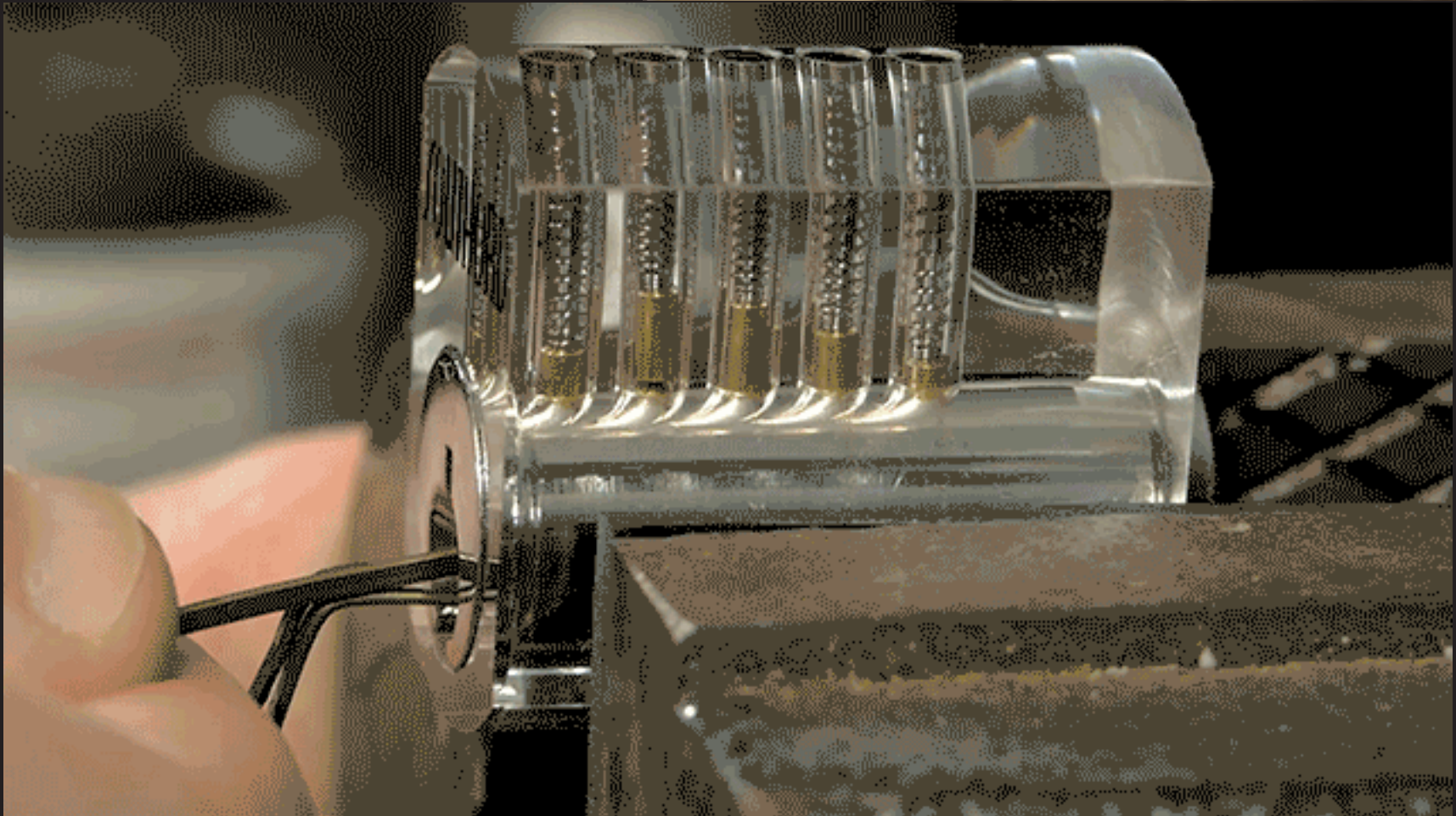


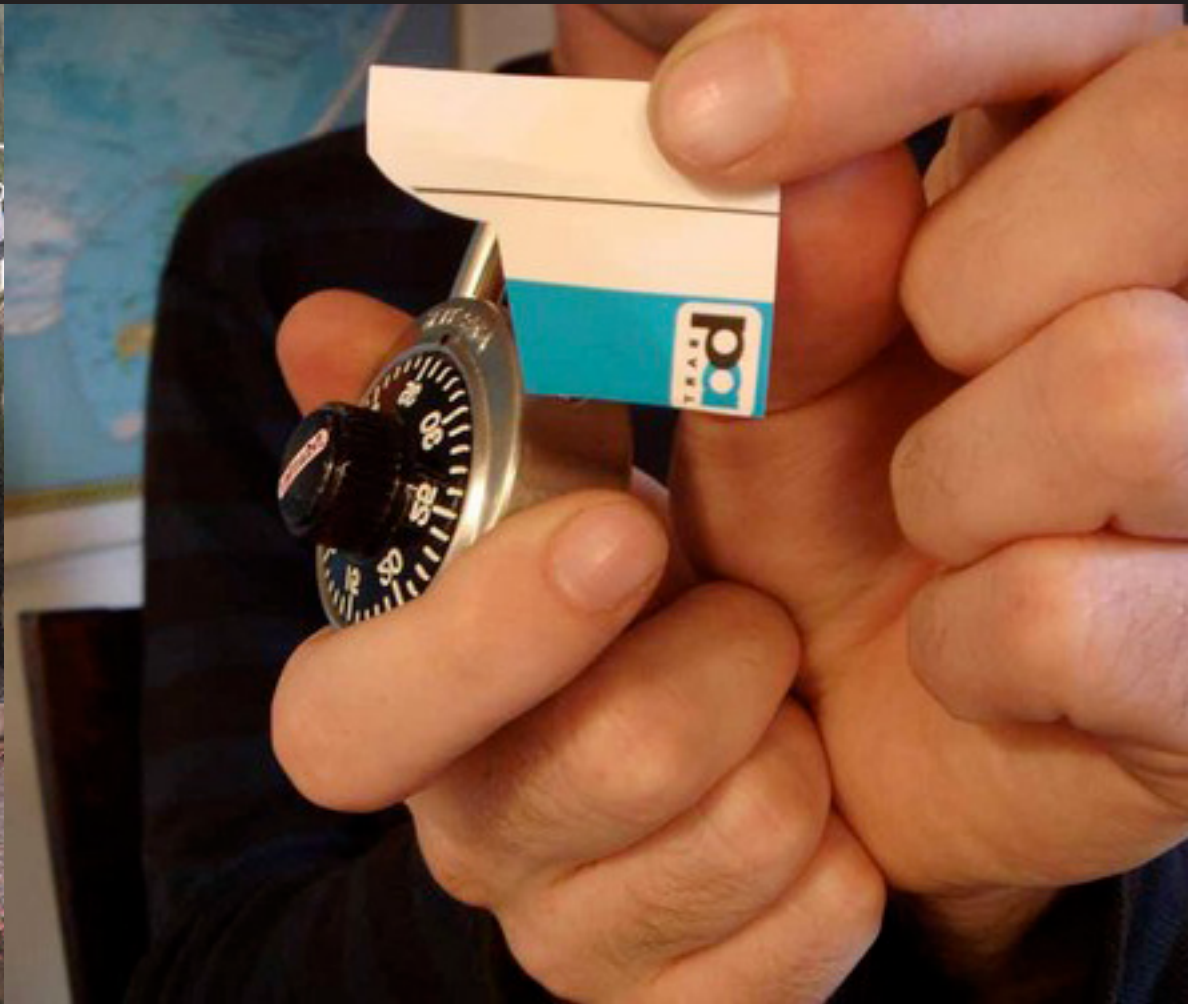


EVA
NO PUBLIC PICK UP
UNASSIGNED PERSONS
OR TRUCKS AT THIS LOCATION
NO ADULTS TO ENTER
MICHIGAN DE-LINE

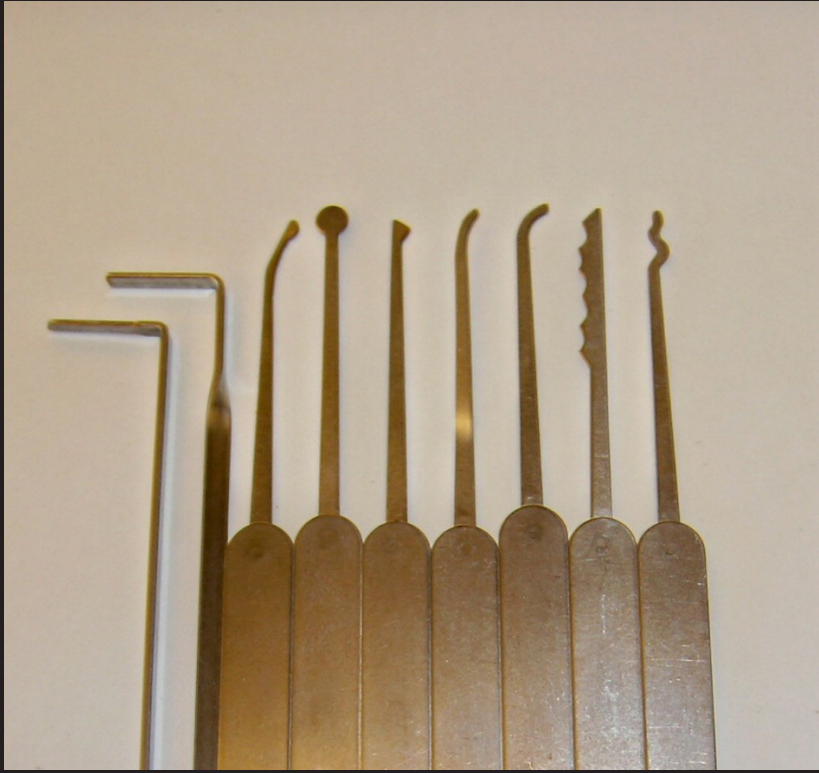












Please
BAG YOUR BOOKS
 Before placing in the
 book return

Book Sale!

Two Dates -
 Saturday, July 21
 &
 Saturday, August 18

Time: 10:00—1:30

Great books at great prices!

- Hardcovers
- Paperbacks
- Children's books

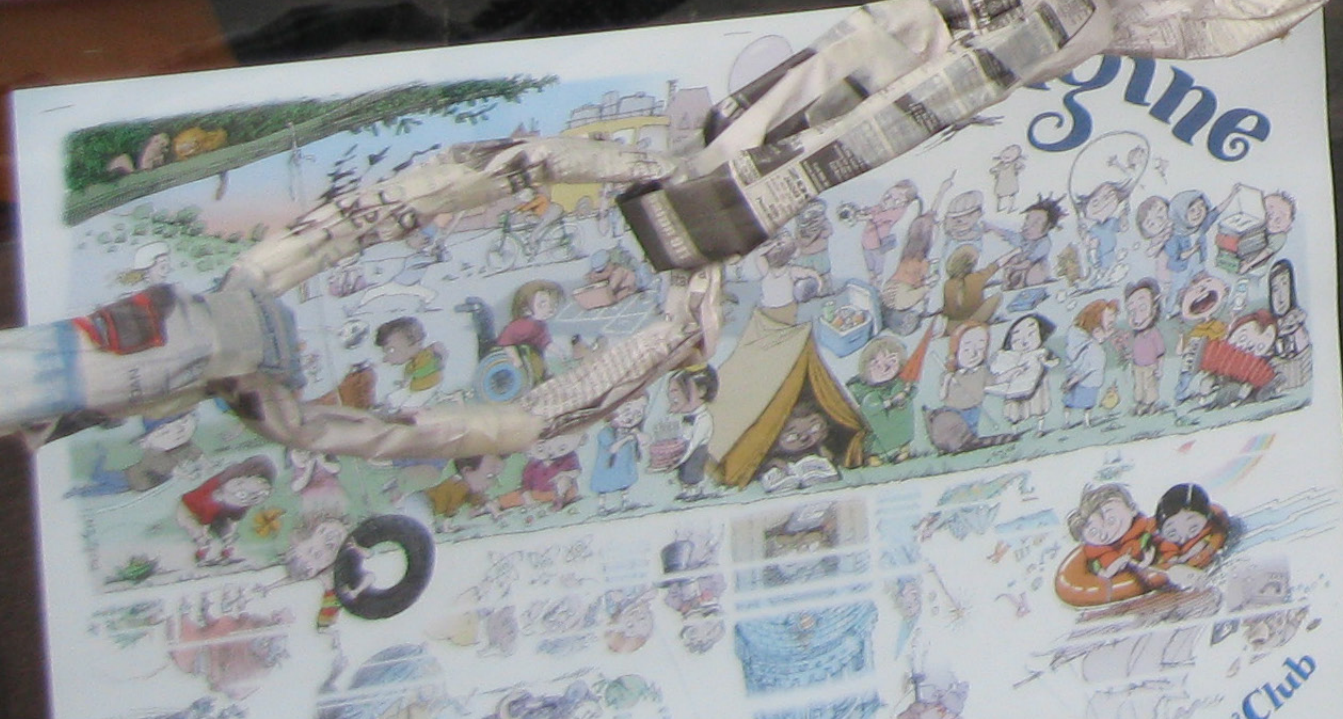
Rosa M. Harvey Library
 Middleton

Little Ray's Reptile Zoo

MONDAY, JULY 23

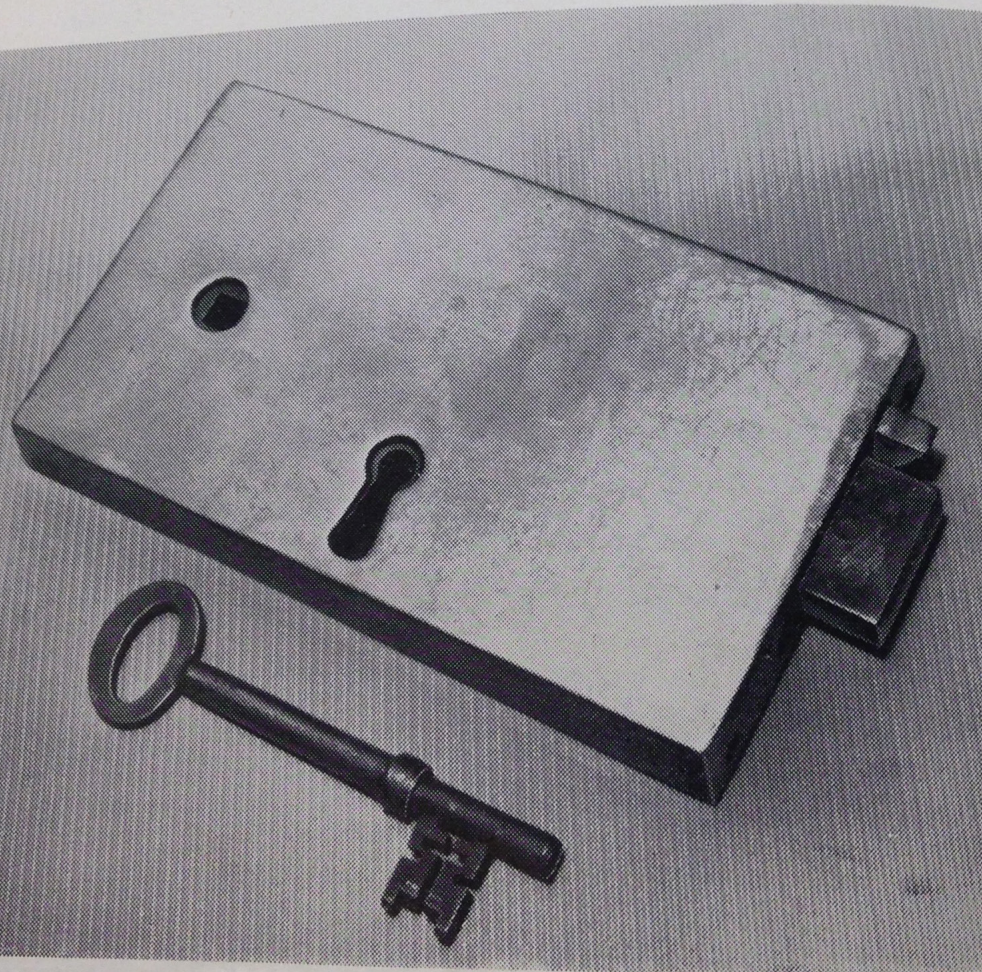
LAWRENCETOWN: 11 AM—12 NOON
 MIDDLETON: 1—2 PM
 BERWICK: 3—4 PM

SPACE IS LIMITED, PLEASE REGISTER



Learn to do some fun
 crosses off some activities off your summer reading
 club list for parents. Join us for an hour of family fun!
 Wednesday, August 8
 1:00 to 2:00
 Register call: 825-4835 or www.valleylibrary.ca

...hot if des...
lower portion of the keyhole. There are thick brass
side bushes at the keyhole. Probably 18th or early 19th
century.



...ever lived a
...ed far and
...knowledg
...nds. One of
...is low, whic
...cially when
...the typical
...pp. 112, 113
...al to a half
...it is so abstr
...ll but one of
...mainly from









68M







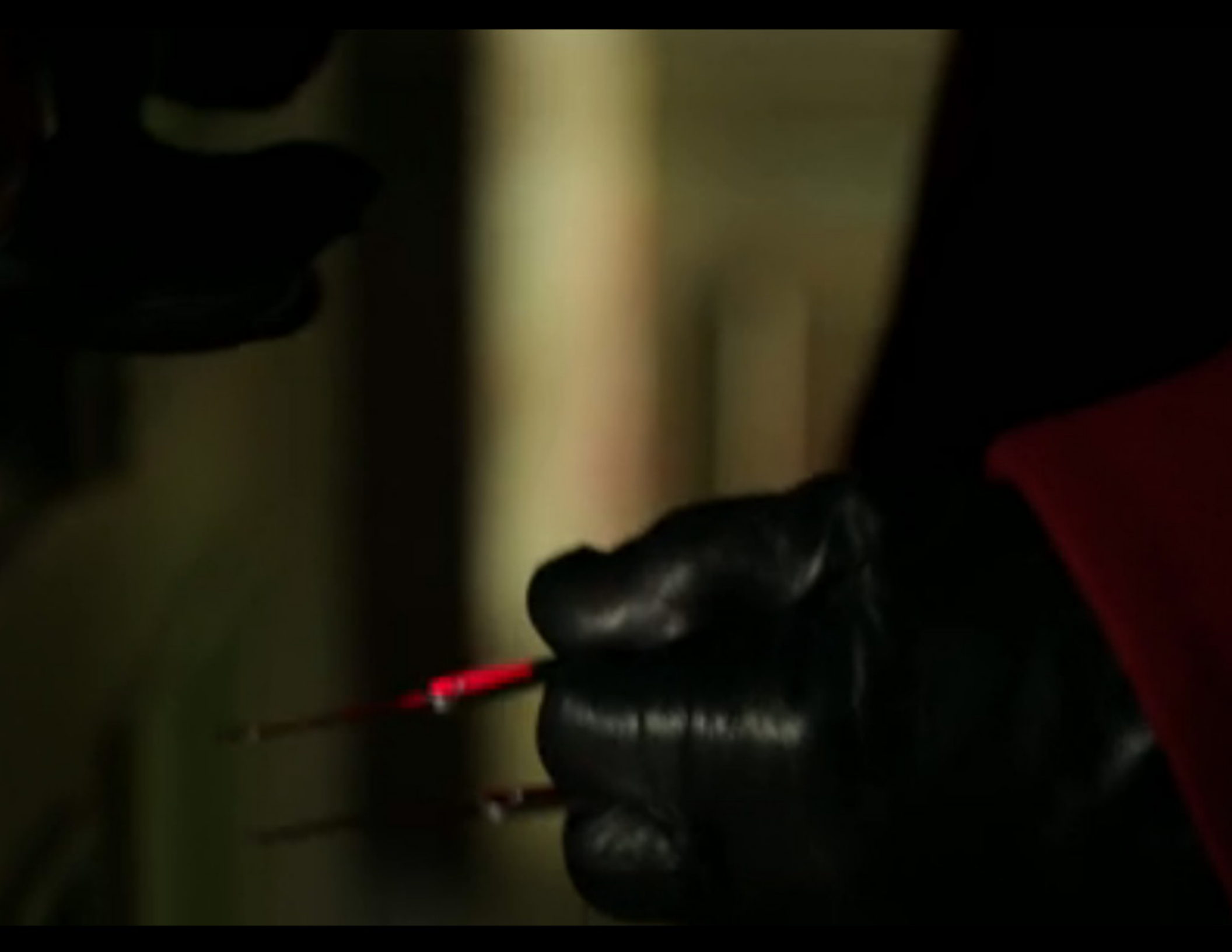
















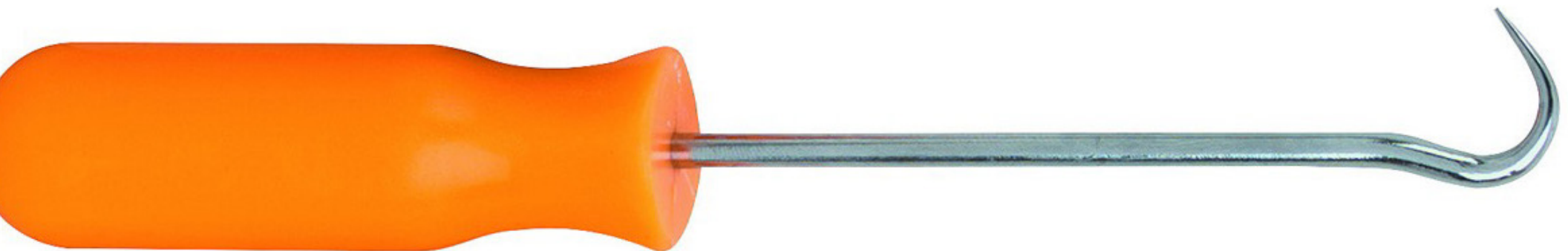
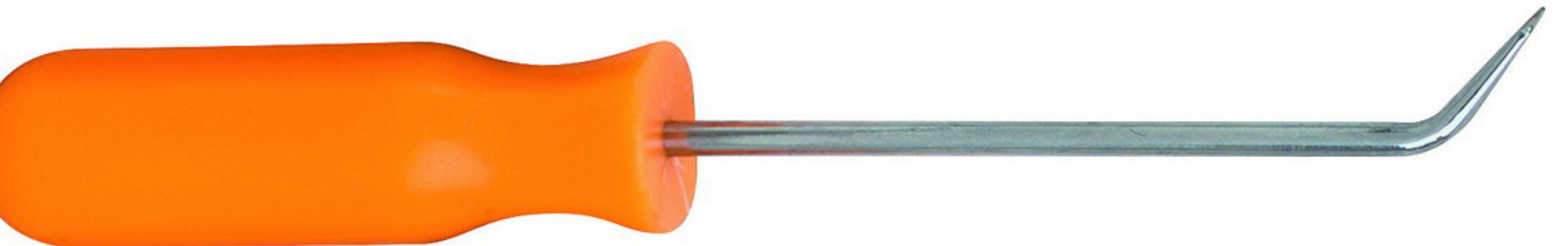


14-20-38



Please
leave red
paddles
open when
leaving
this lock







Sterling Silver











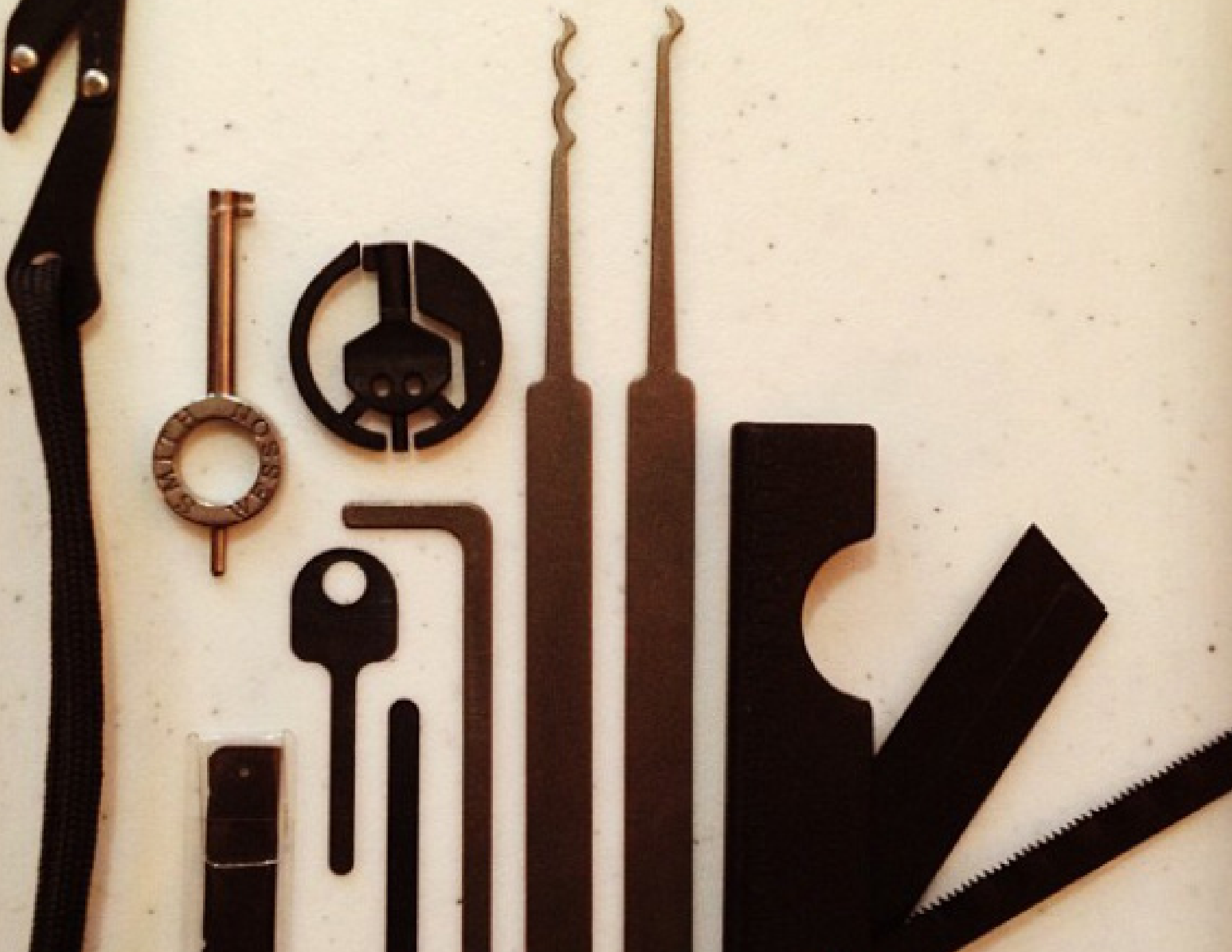












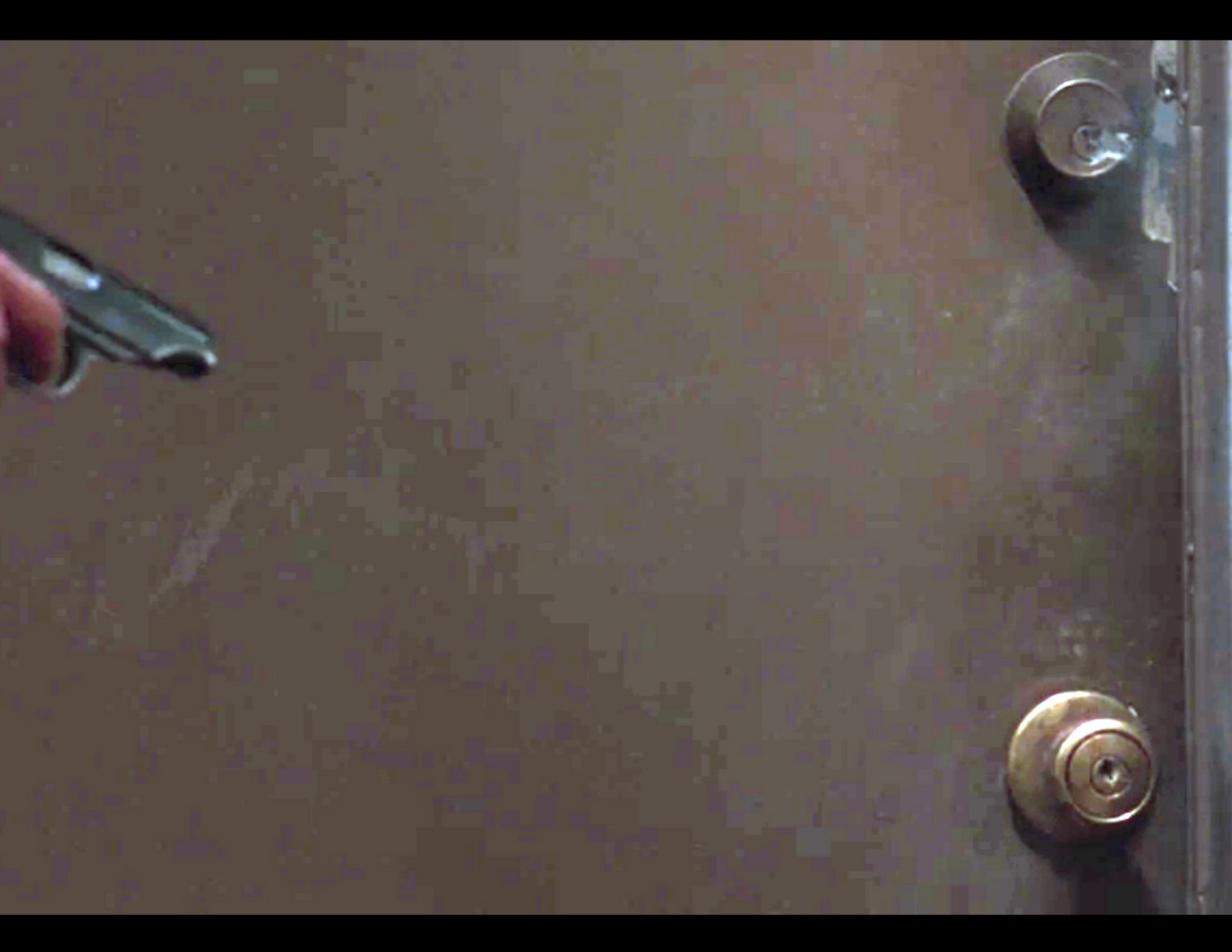


























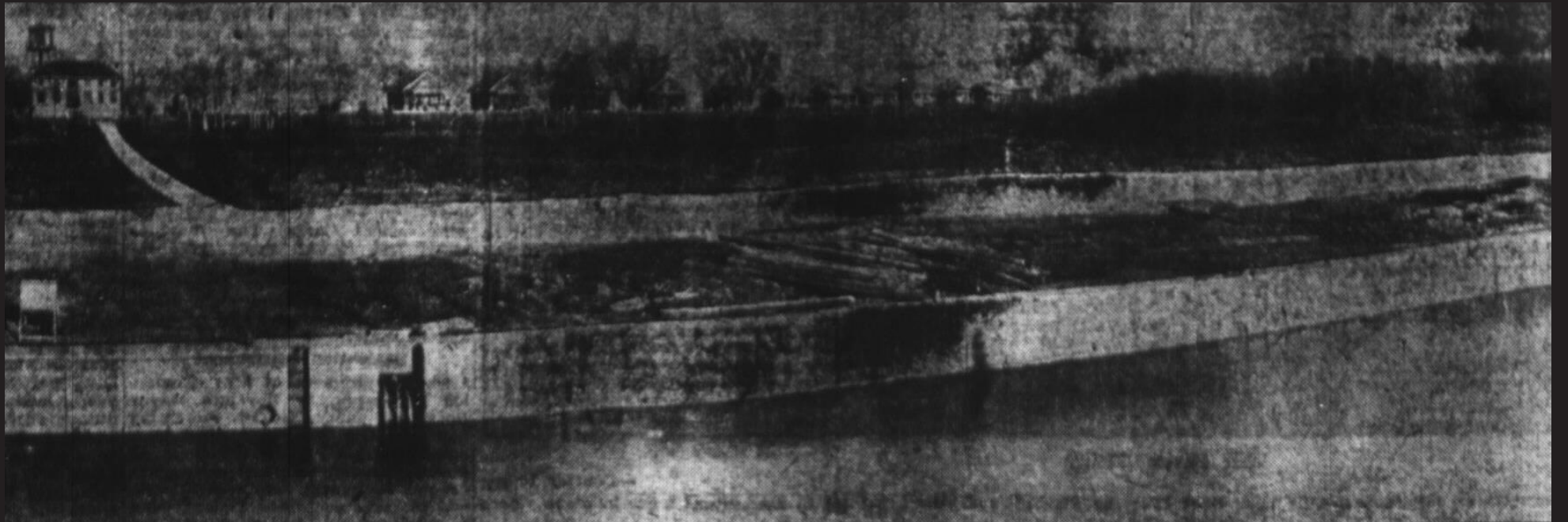


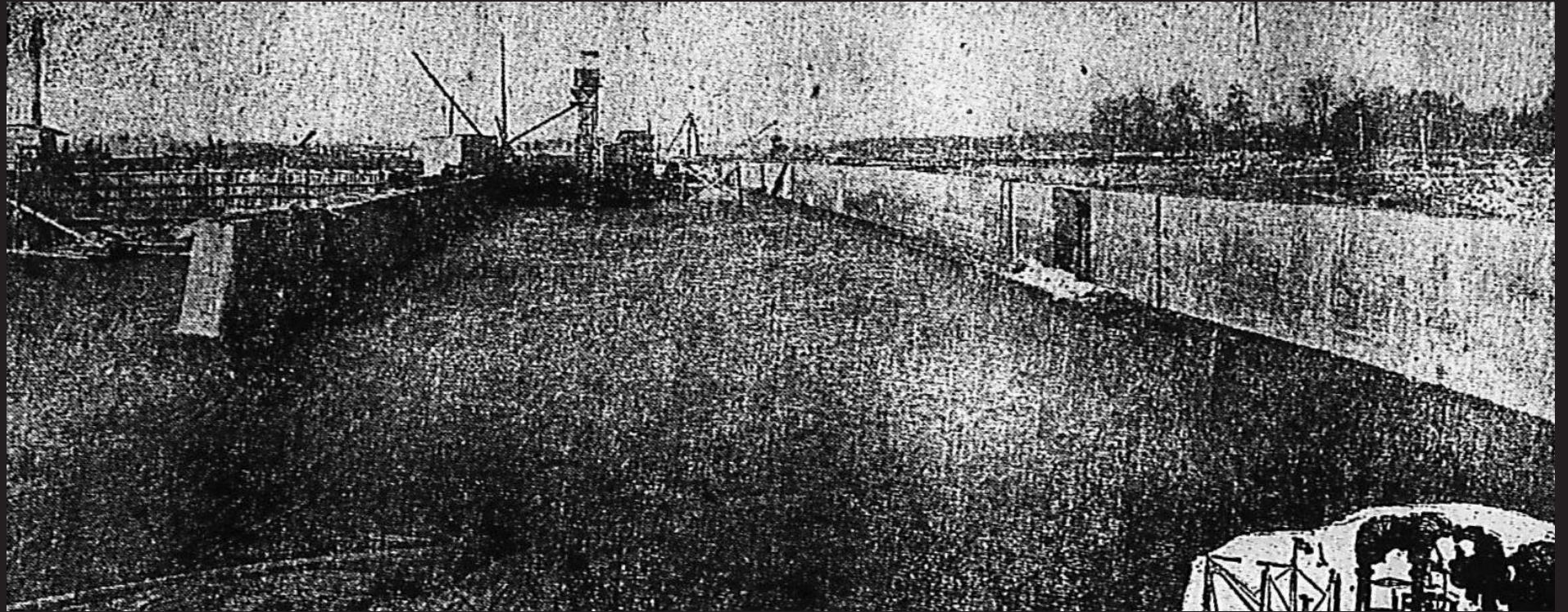






















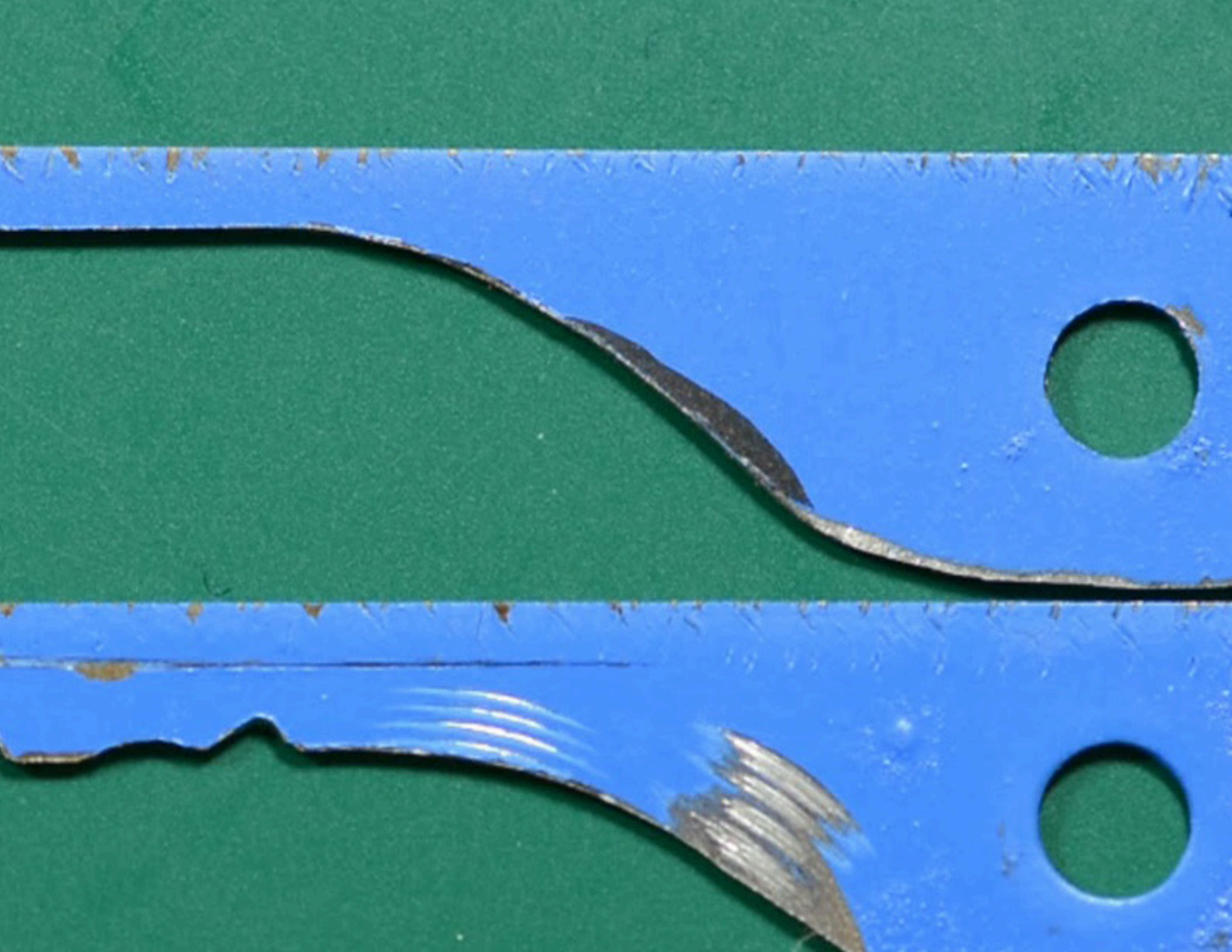


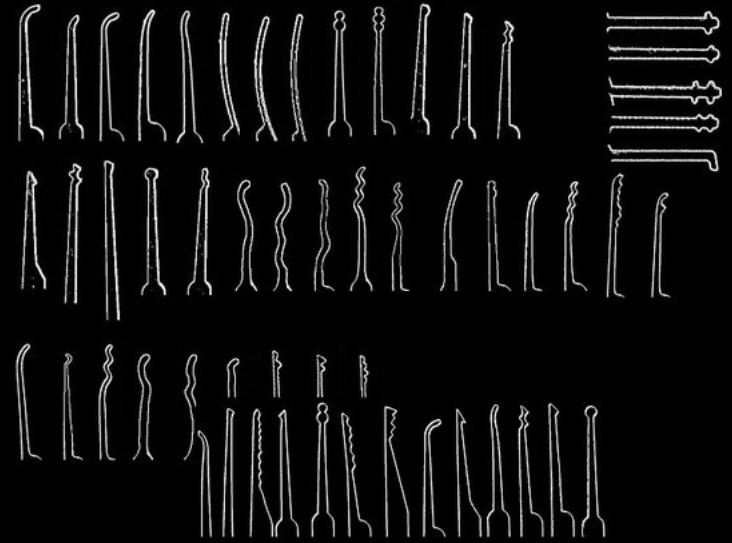


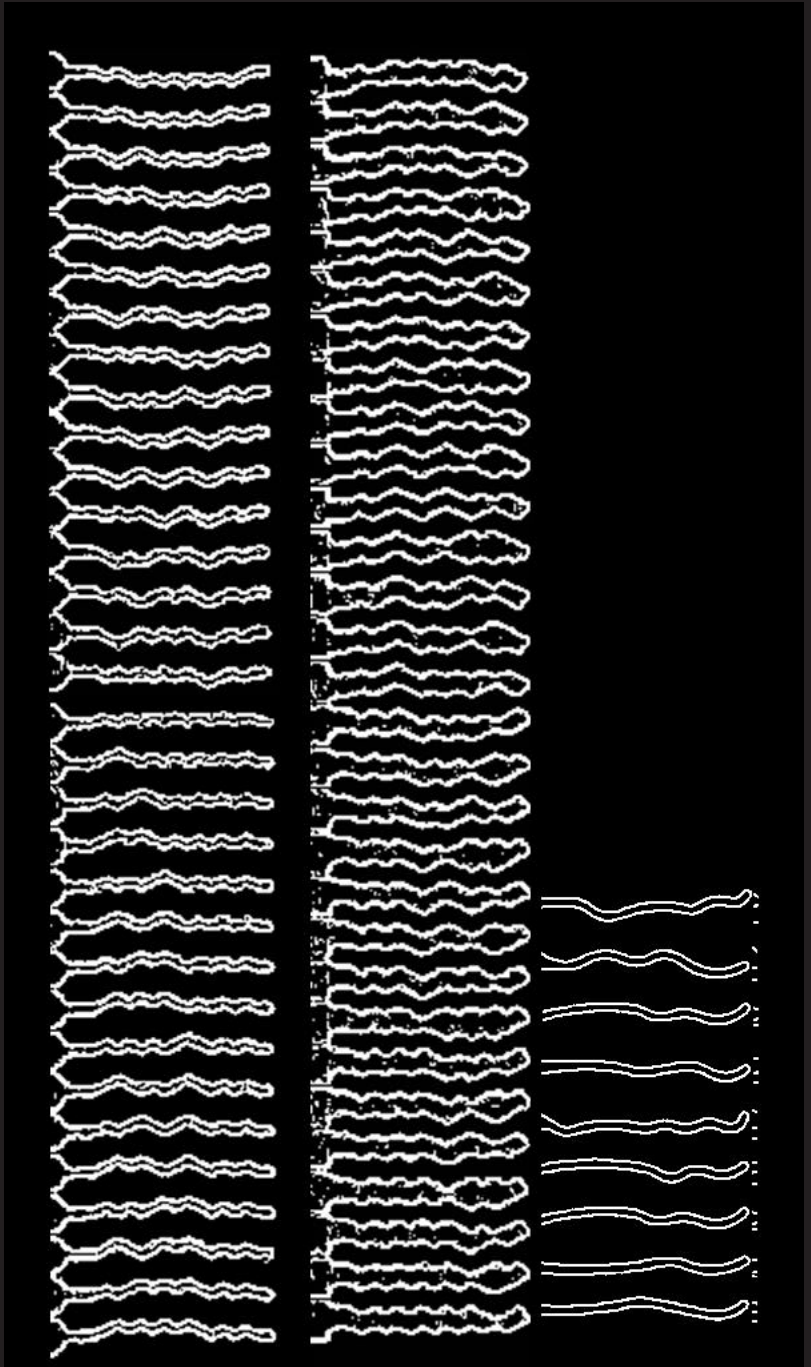


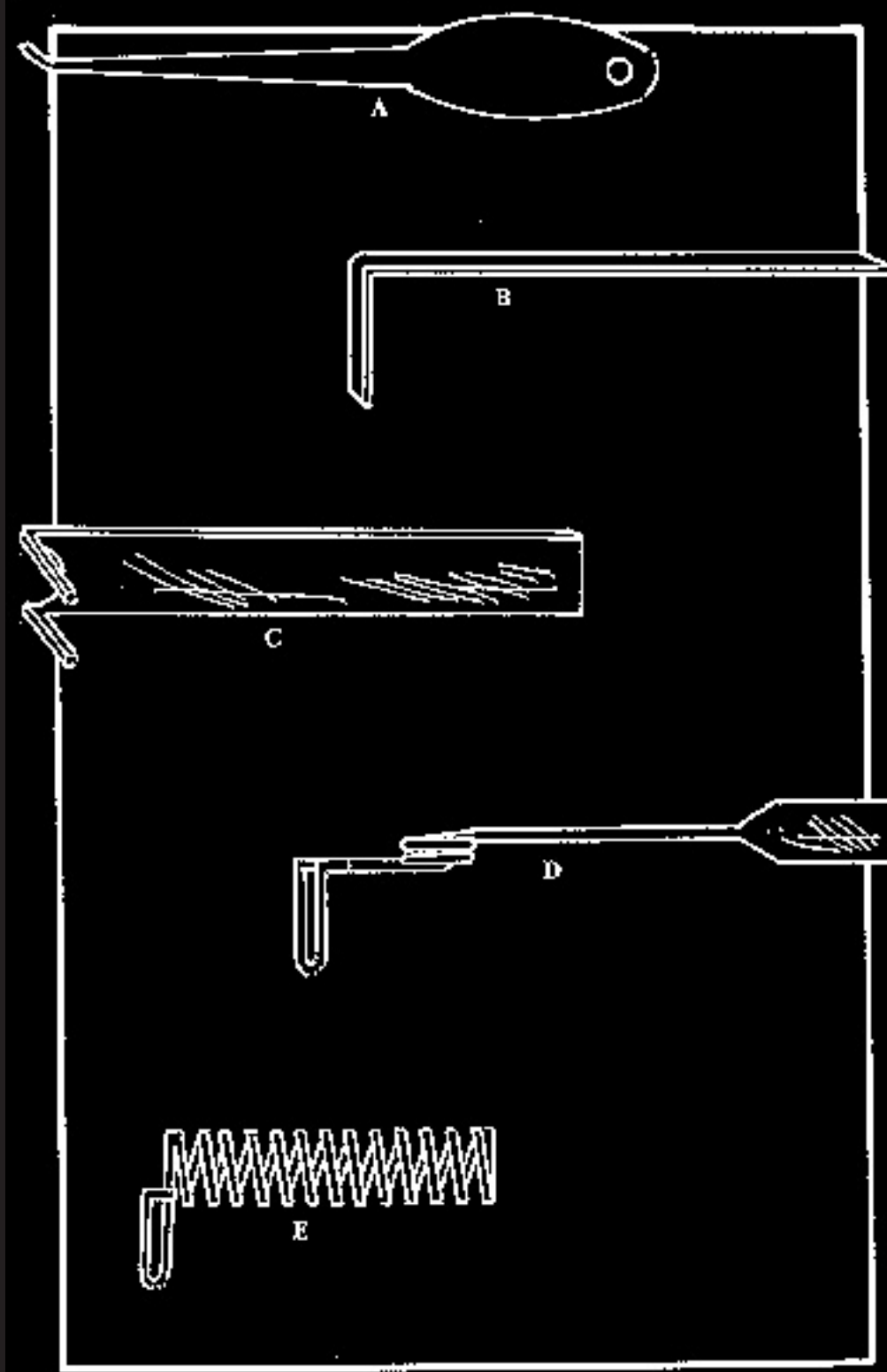




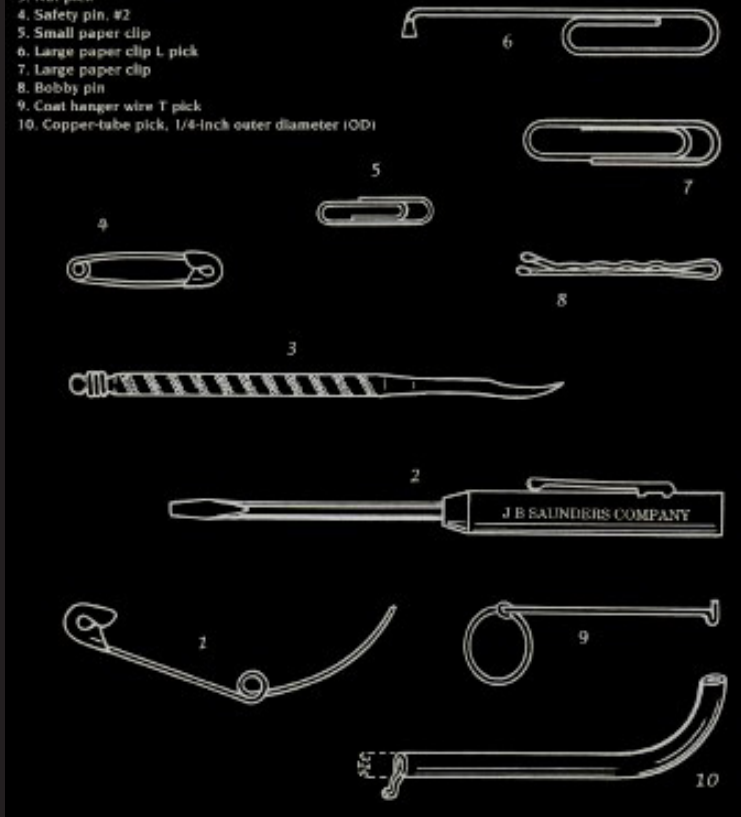


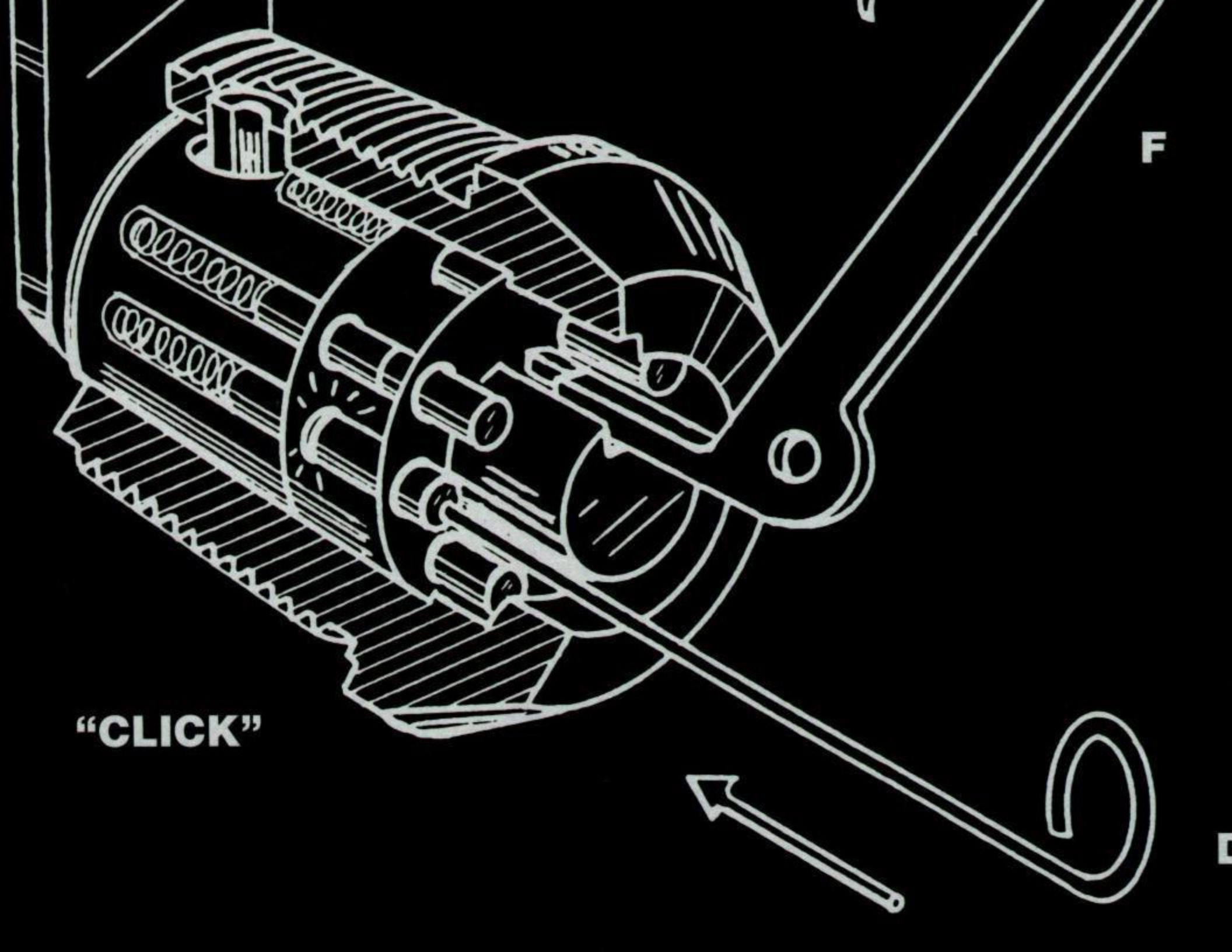






1. Safety pin, #3, "hook" pick
2. Pocket screwdriver
3. Nut pick
4. Safety pin, #2
5. Small paper clip
6. Large paper clip L pick
7. Large paper clip
8. Bobby pin
9. Coat hanger wire T pick
10. Copper-tube pick, 1/4-inch outer diameter (OD)





"CLICK"

F

D

